



# Harrogate High School Site Update

LAING O'ROURKE

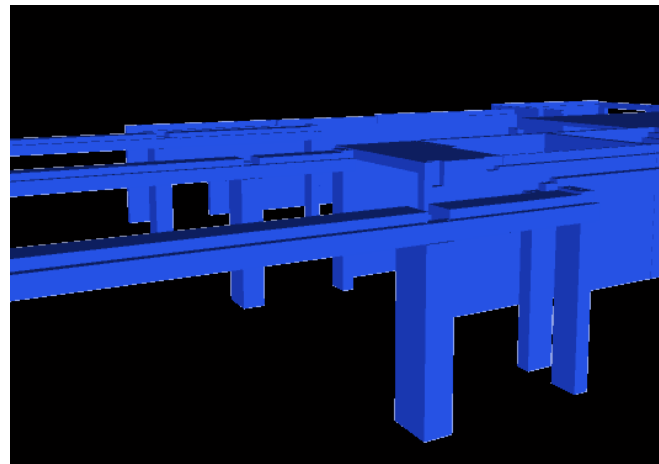
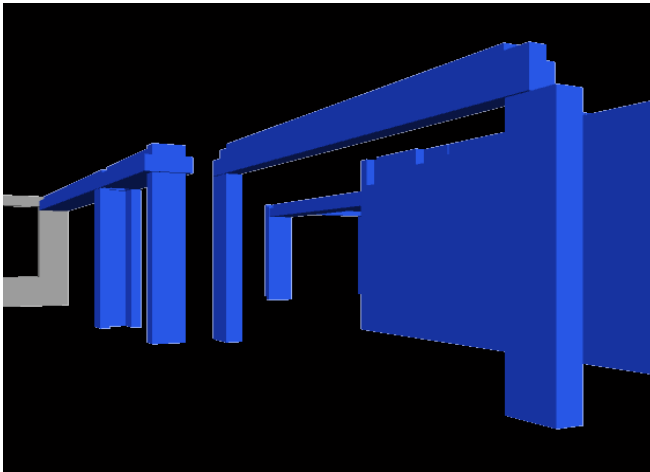
April 2016

Welcome to the spring edition of the Laing O'Rourke newsletter for the new Harrogate High School.

It's our intention to keep you regularly informed during the construction works and also give you the opportunity to get in touch if you have any issues or you would like to learn more.



Construction work is progressing well at Harrogate High School. The new school concrete structure commenced in March and the new Sports Centre is due to start in April. Our construction team are based in the site offices situated adjacent to Harrogate Hockey Club.



Views from the design model...

...compared with the installation on site

## DfMA Delivery – From Design to Reality

Laing O'Rourke offer a DfMA solution for construction of the new school. This is Design for Manufacture and Assembly. The new building is fully designed, modelled and constructed off site as components. These are transported to Harrogate and assembled on site as shown in the above photographs.

## The Image of Construction

In February we had a site visit from the Considerate Constructors' external assessor to inspect how Laing O'Rourke were delivering the project. The site received an 'Excellent' rating with a score of 40 out of 50, however we are always looking for improvements in how we undertake our work and how this effects clients, neighbours and the environment.



### Key Dates:

#### March 2016

Structural frame installation for the main school building

#### April 2016

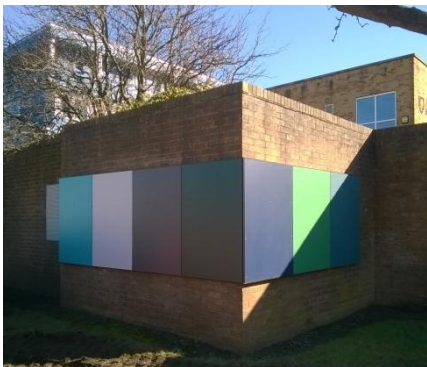
Construction of the new Sports Centre starts.

Internal walls and mechanical and electrical works to commence in the new school

#### May 2016

Completion of the structural frame to the new school

Sports centre super-structure erection



## Colour Samples on Display

The new school and sports centre are to have coloured cladding panels on the exterior to complement the exposed concrete and glazing. These are on display opposite the school car park .



## Access Road Re-Constructed

The access road to Harrogate Hockey Club was fully re-constructed in February. We would like to thank everyone for their patience during these works.

## Community News

The Laing O'Rourke team at Harrogate High School recently helped a local cyclist who was involved in a car accident on Penny Pot Lane. We provided a wheelchair access ramp to his property which allowed him to be discharged early from hospital during his recovery.



### Thank you from the Project Manager

Our project manager, Paul , would like to thank Harrogate High School, St Robert's Catholic Primary School, Harrogate Hockey Club, and all the local residents for their cooperation and patience during our time on site.

Throughout the duration of the works, our team are committed to delivering the project with as little disruption to the surrounding area as possible. We wish you a happy Easter.

# Questionnaire and Feedback

## Harrogate High School



Laing O'Rourke are open to any comments about how we may improve and also anything that we are doing that you are pleased with.

Please take a few minutes to complete the questions below:

Have you been affected by excessive noise caused by the construction site ? (Give Details)

.....  
.....  
.....

Have you been affected by excessive dust caused by construction activities on site ? (Give Details)

.....  
.....  
.....

Have you found the roads to be dirty and remain un-cleaned for numerous days? (Give Details)

.....  
.....  
.....

Is there anything that we could be doing that would help improve the image of construction or reduce the impact the works are having on you ? (Give Details)

.....  
.....  
.....

Is there anything that we are doing well that you would like to see more of ? (Give Details)

.....  
.....  
.....

Have you experienced any problems with abusive or disrespectful behaviour from any operatives working on the site ? (Give Details)

.....  
.....  
.....

Any other comments:

.....  
.....  
.....

Many thanks for taking the time to complete this questionnaire.  
Sent on behalf of the Laing O'Rourke Project Team.

Please return to the Site Office located adjacent to Harrogate Hockey Club or scan and email to:  
[panderson@laingorourke.com](mailto:panderson@laingorourke.com)

Contact: 07917071688